

Community Together

Resilient Community Center Design for Island Communities

Photo by Diana Serrano, courtesy Resilient Power Puerto Rico



Community Together

Resilient Community Center Design for Island Communities

This Guide will inform the design of resilient community centers to **strengthen organizational capacity, promote year-round education, and withstand environmental, social, and economic changes.** The Guide offers practical suggestions, including how to develop operational ability and relevant physical assets—like solar panels and water cisterns—to achieve resilience.



Photo by Diana Serrano, courtesy Resilient Power Puerto Rico

Main Contributors



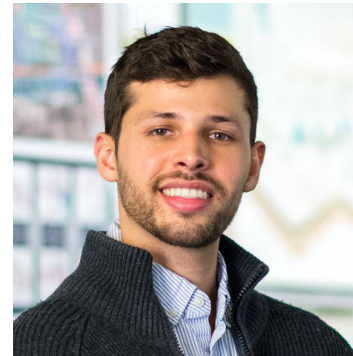
Yanel de Angel Principal at Perkins&Will / co-founder resilientSEE-PR



María Roldan, Designer at Perkins&Will / resilientSEE-PR



Carolina Otero, Interior Designer at Perkins&Will / resilientSEE-PR



Ismael Segarra, Designer at Perkins&Will / resilientSEE-PR



Sarah Brophy, Graphic Designer at Perkins&Will / resilientSEE-PR



Jennifer Ingram, Architect at Perkins&Will / resilientSEE-PR



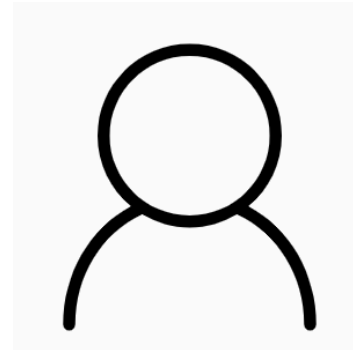
Laurie Schoeman, Senior National Program Director – Resilience and Disaster Recovery, Enterprise Community Partners



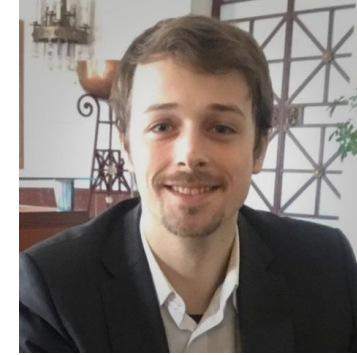
Karla Peña, Director of Mercy Corps Puerto Rico



Jeronimo Candela, Former Director of Mercy Corps Puerto Rico



Ivelisse Esquilin, Mercy Corps Puerto Rico, Community Disaster Risk Reduction Trainer



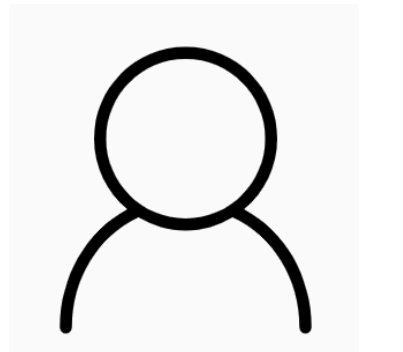
Nicholas Siler, Mercy Corps Puerto Rico, Community Disaster Risk Reduction Intern



Maggie Favretti, Design Thinker, Mentor, Award-winning Educator, Founder of Design Ed 4 Resilience



Malu Blazquez, Executive Director of ReImagina Puerto Rico



Alicia Díaz, Research and Policy Analysis, ReImagina Puerto Rico



Cristina Fawaz, Research and Policy Analyst, ReImagina Puerto Rico



Juan Antonio González, Project Manager, ReImagina Puerto Rico

Senior Advisors



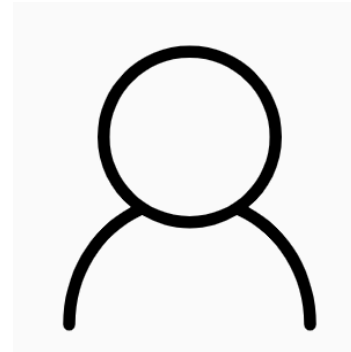
Dr. Janice Barnes, Managing Partner, Climate Adaptation Partners / resilientSEE-PR



Antonio Vázquez, Formerly at School of Architecture, University of Puerto Rico / Consultant for Enterprise Community Partners



Matt de la Houssaye, Director Sustainable Sites at Global Green



Mary Ann Gabino, Senior VP, Fundación Comunitaria de P.R.



Dr. Cecilio Ortiz, Cecilio Ortiz García, Associate Professor in the Department of Social Sciences, University of Puerto Rico / resilientSEE-PR

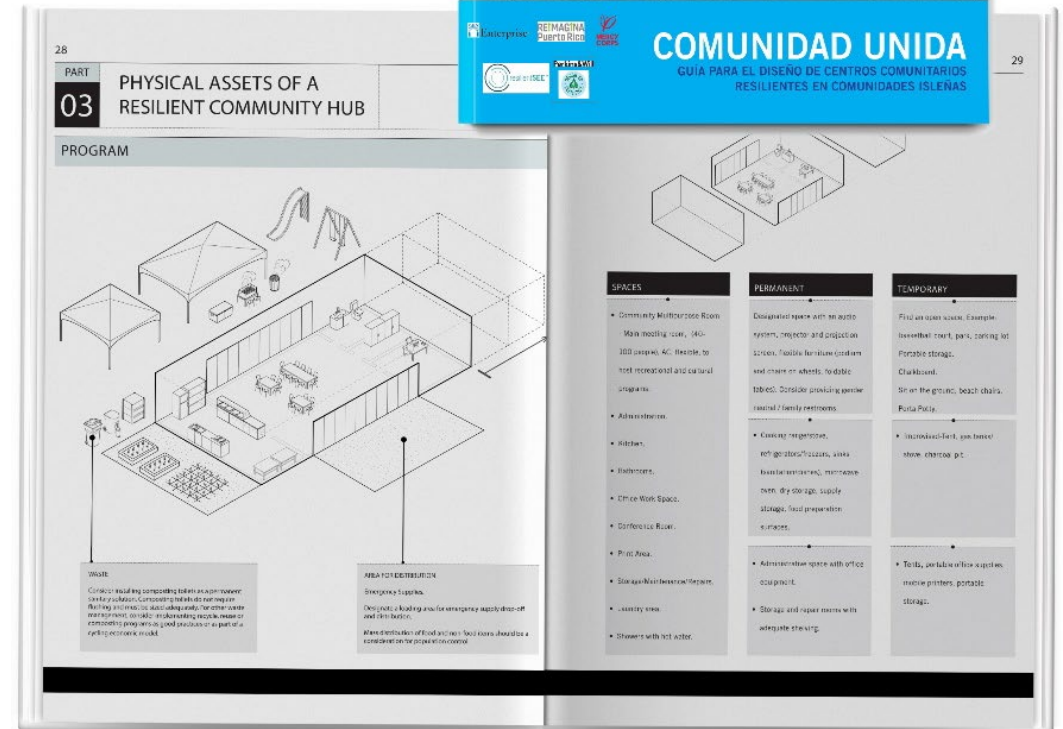
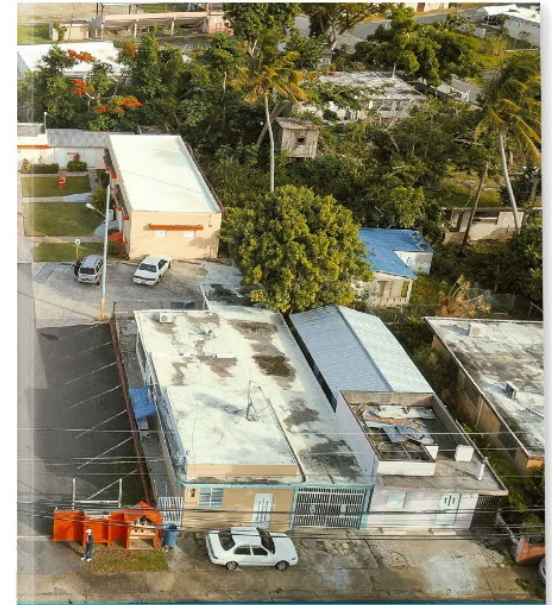


Natasha Espada, Founder and Principal of Studio Eneé / resilientSEE-PR

Download this guide in English or Spanish

<https://www.resilientsee-pr.com/communities-together>

<https://www.enterprisecommunity.org/solutions-and-innovation/disaster-recovery-and-rebuilding/keepsafe>



The guide is available in PDF

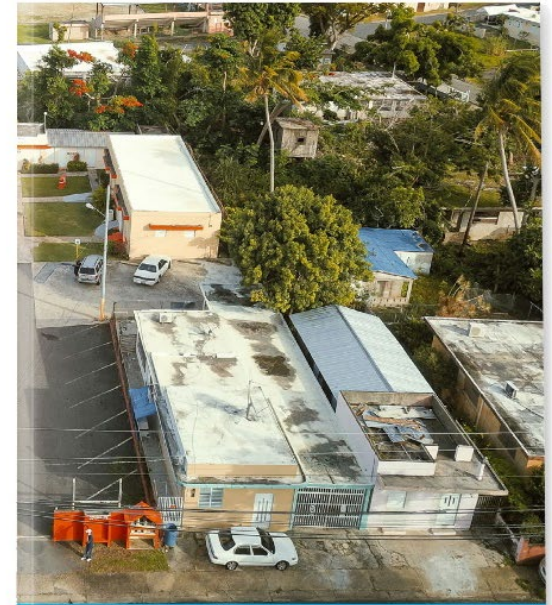
Introduction

Part 1: Community Organization

Part 2: Operating a Resilient Community Center

Part 3: Physical Assets of a Resilient Community Center

Part 4: Community Case Studies



28

PART 03 PHYSICAL ASSETS OF A RESILIENT COMMUNITY HUB

PROGRAM

WASTE
Consider installing composting toilets as an eco-friendly solution. Composting toilets do not require flush water and are also safe for the environment. Consider installing recycling bins or composting programs and providing a point of recycling nearby.

AREA FOR DISTRIBUTION
Emergency Supplies
Designate a holding area for emergency supplies and first aid kits. When distribution of food and supplies is needed, this area should be a convenient place for distribution.

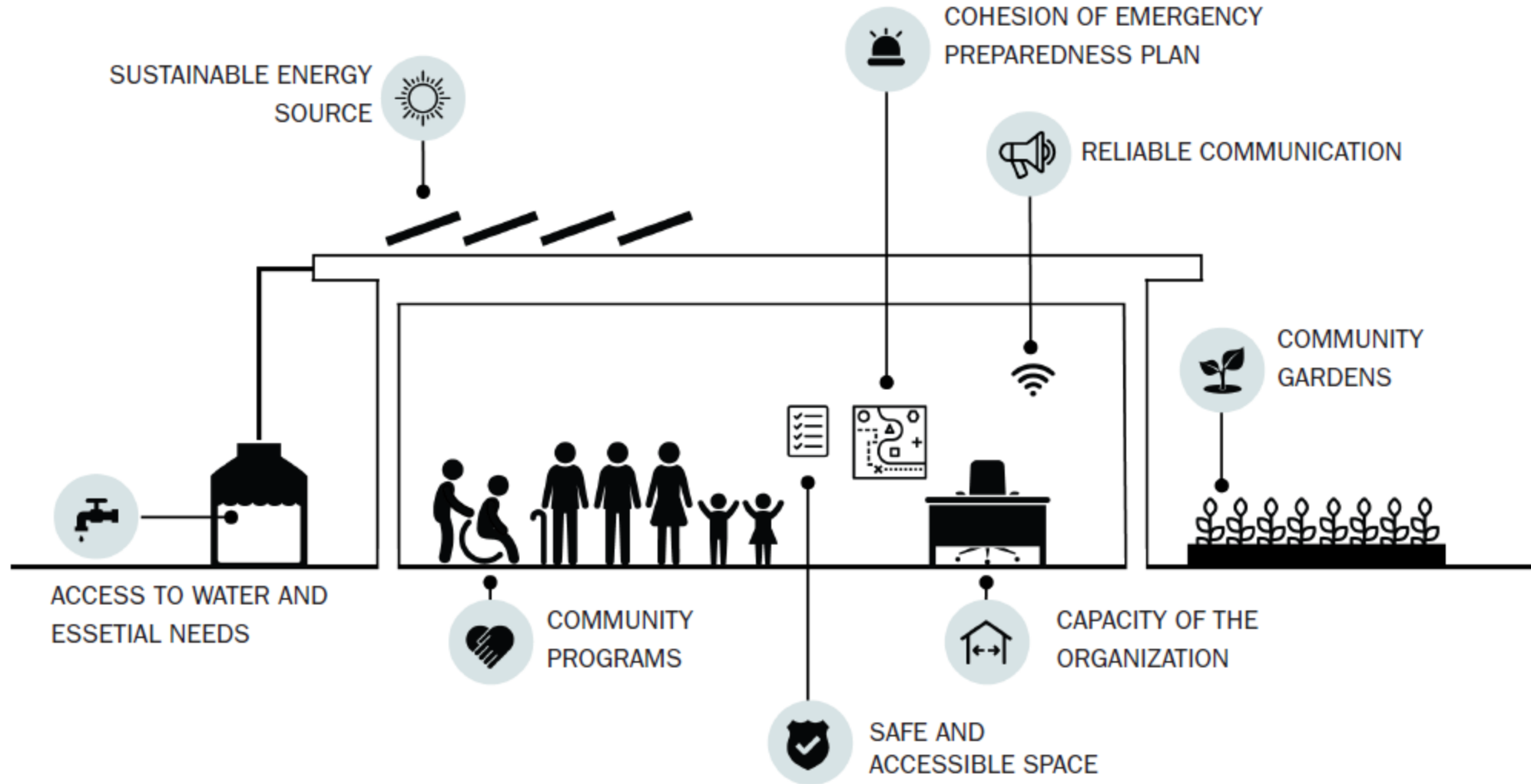
29

COMUNIDAD UNIDA
GUÍA PARA EL DISEÑO DE CENTROS COMUNITARIOS RESILIENTES EN COMUNIDADES ISLENAS

SPACES	PERMANENT	TEMPORARY
<ul style="list-style-type: none">Community Multipurpose RoomMain meeting area, 100-200 people. AC. flexible to host recreational and cultural programsAdministrationKitchenRestroomsOffice Work SpaceConference RoomPrint AreaStorage for inventory/repairLaundry areaShowers with hot water	<ul style="list-style-type: none">Dedicated space with an auto system, projector and projection screen, flexible furniture program and chairs or stools, foldable tables. Consider providing gender neutral / family membersCooling refrigerators, refrigerators/cupboards, sinksAvailable materials, maintenance room, dry storage, supply storage, food preparation surfacesAdministrative space with office equipmentStorage and repair rooms with adequate shelving	<ul style="list-style-type: none">Find an open space. Example: basketball court, parking lotPortable storageChairs/stoolsSet on the ground, beach chairs, Porta PottyIncluded first aid, gas burner stove, charcoal p.t.Toilets, portable office equipment, printer, portable storage

Content

What is a Resilience Hub?



Part 1

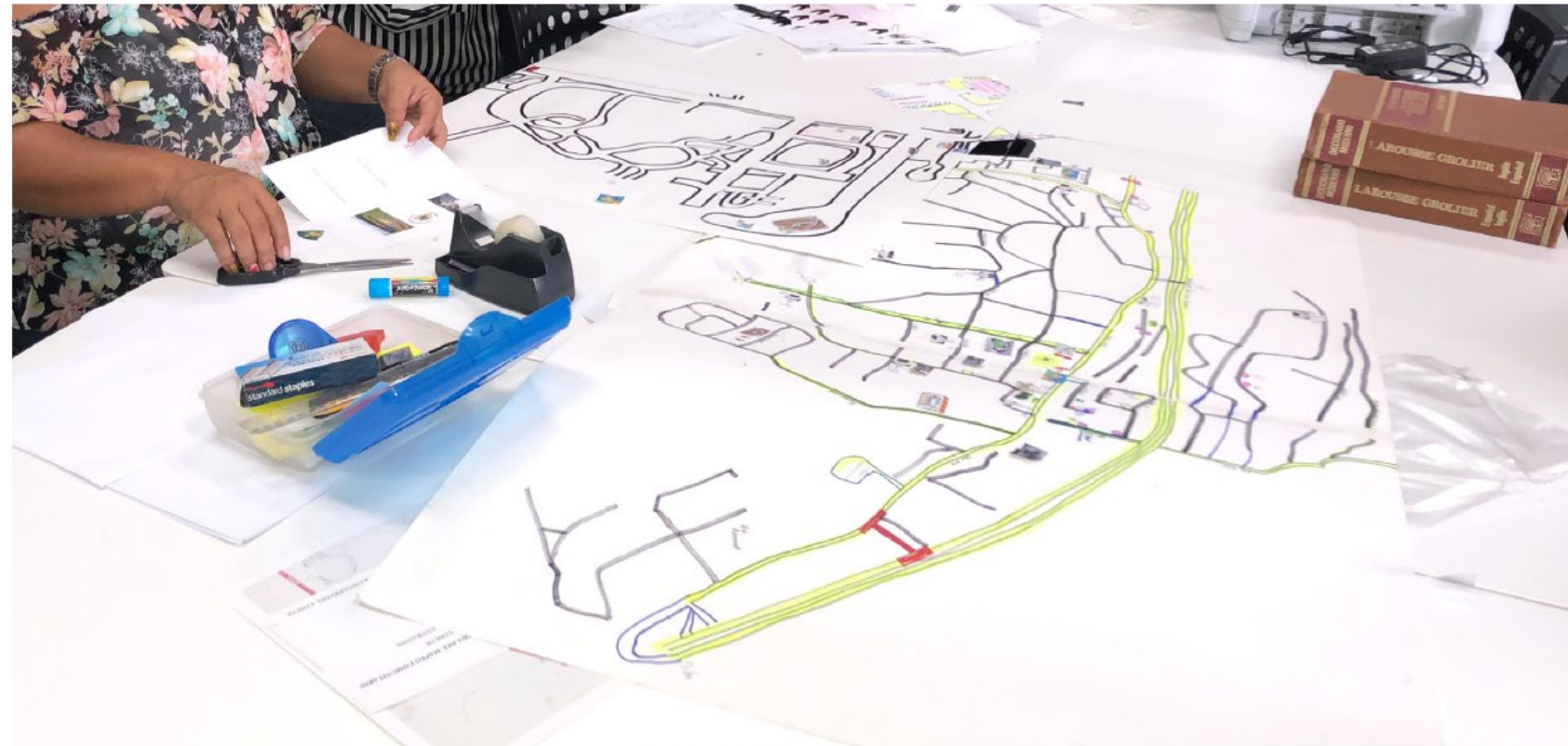
Community Organization

Risks and Vulnerabilities

- Create community profile map
- Vulnerability Framework
- Host Community Meetings
- Develop Plans

Non-Emergency Activities

- Administrative Organization
- Community Gardens
- Wellness Programs
- Economic Development Programs
- Educational Programs
- Cultural Programs



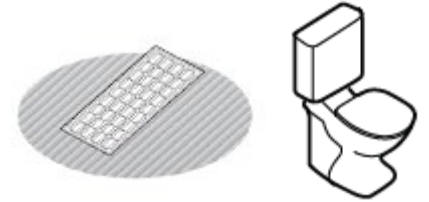
Community mapping, Comité de Desarrollo Social y Cultural de Dagua, Inc. Naguabo. Photo by: María Roldán

Part 2

Operating a Resilient Community Center

Days Pre / During / After Emergency

- Communication
- Temporary Shelter
- First Aid
- Utilities
- Access
- Nutrition

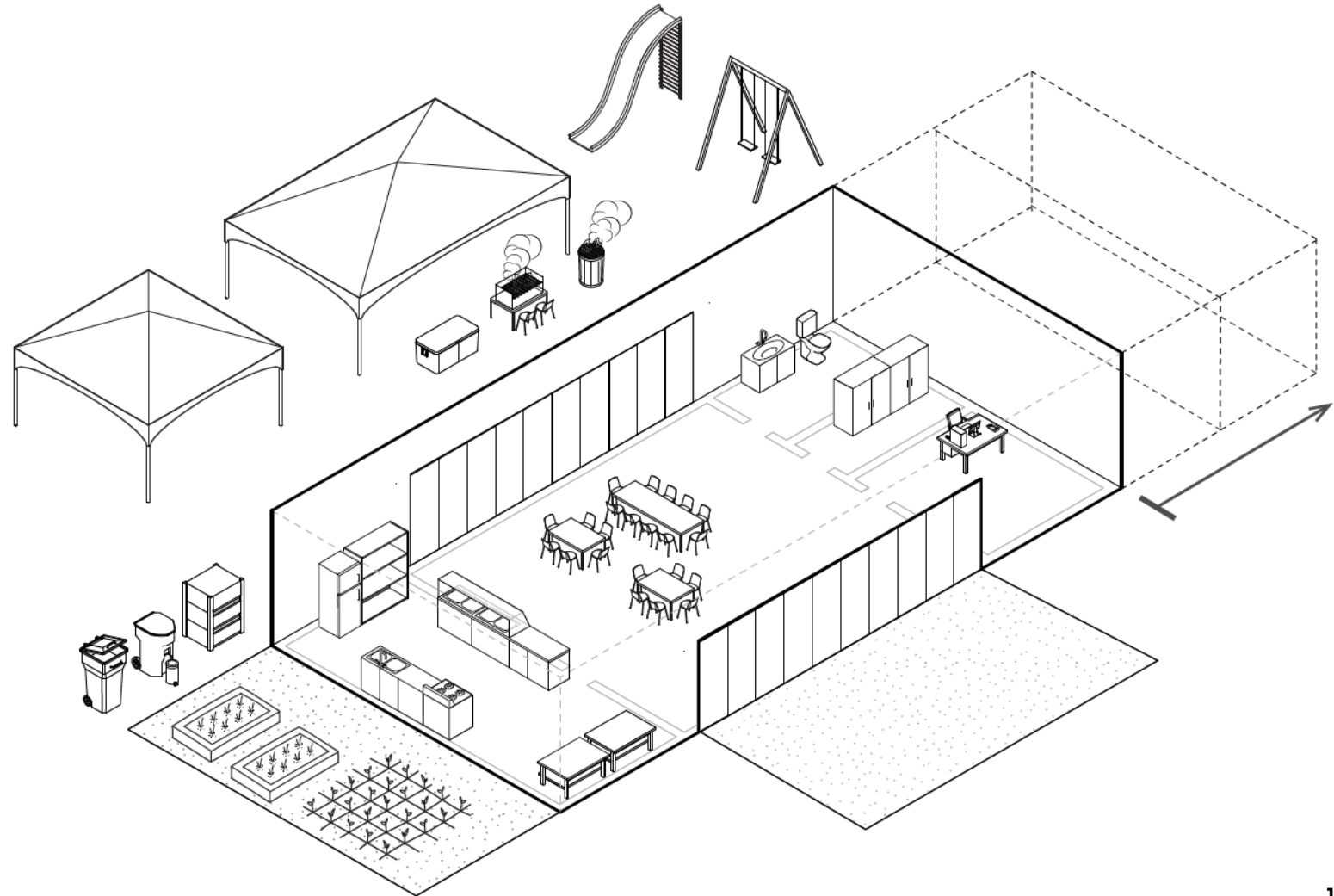


Part 3

Physical Assets of a Resilient Community Center

Spaces

- Permanent
- Temporary

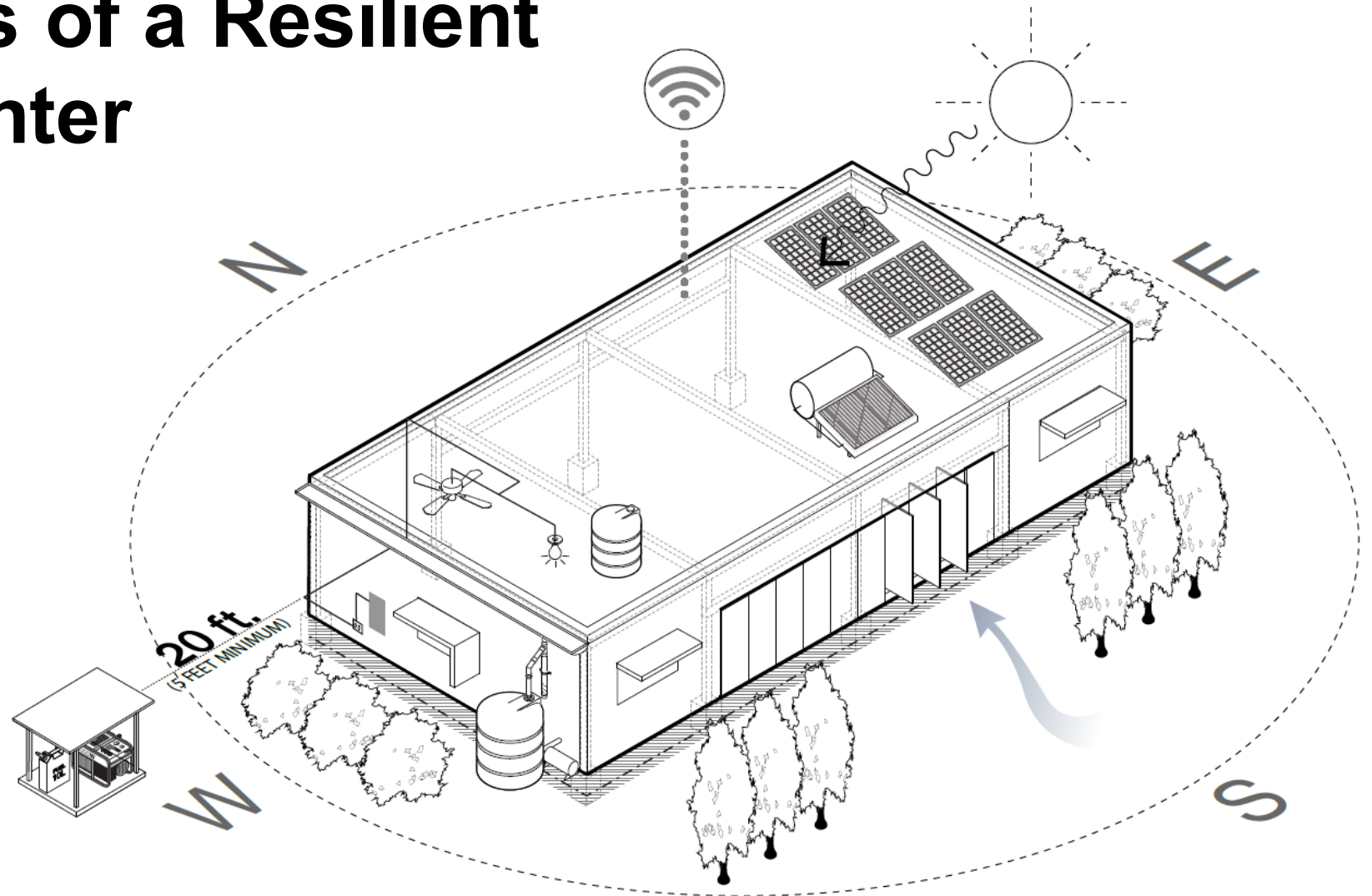


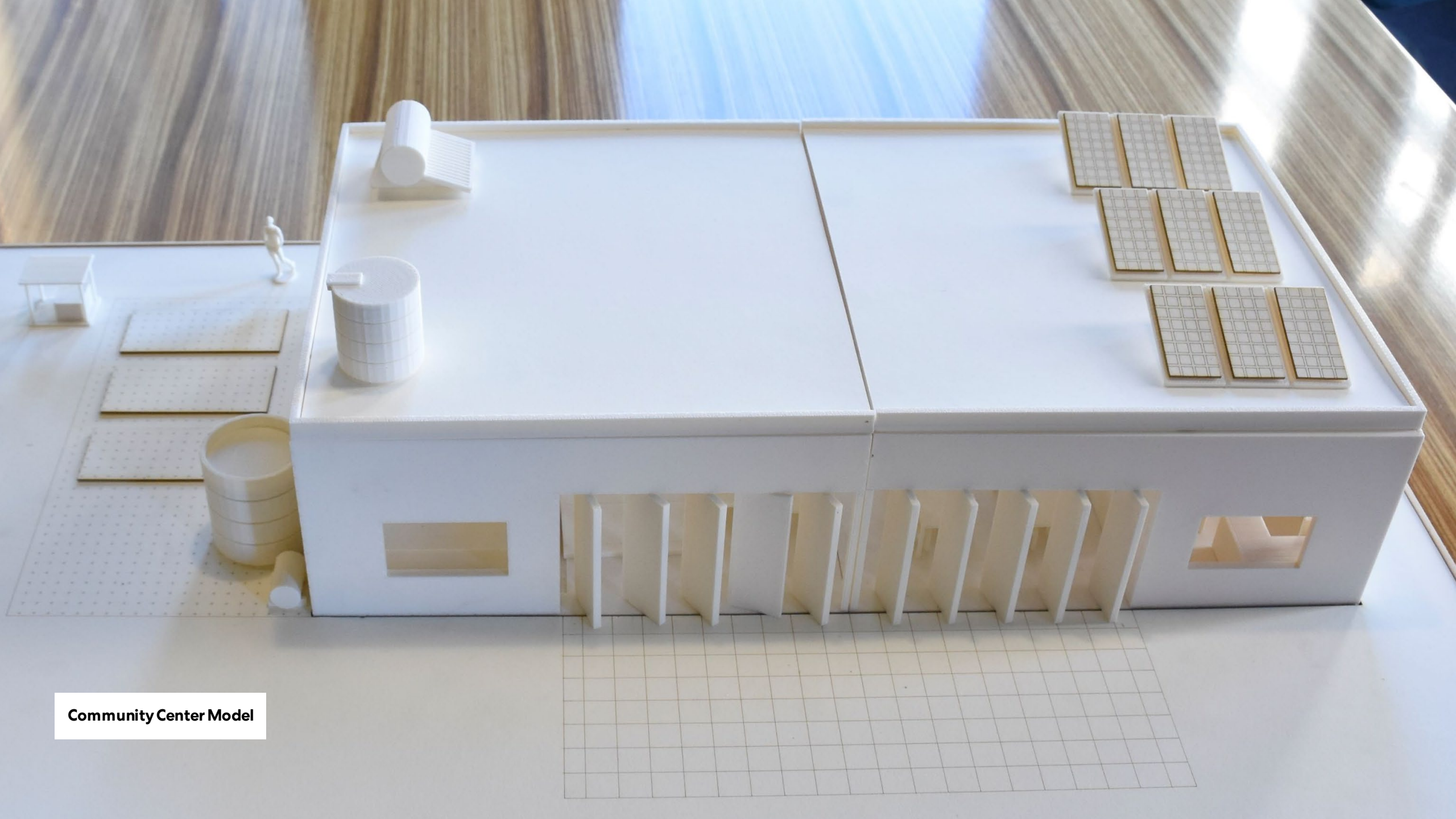
Part 3

Physical Assets of a Resilient Community Center

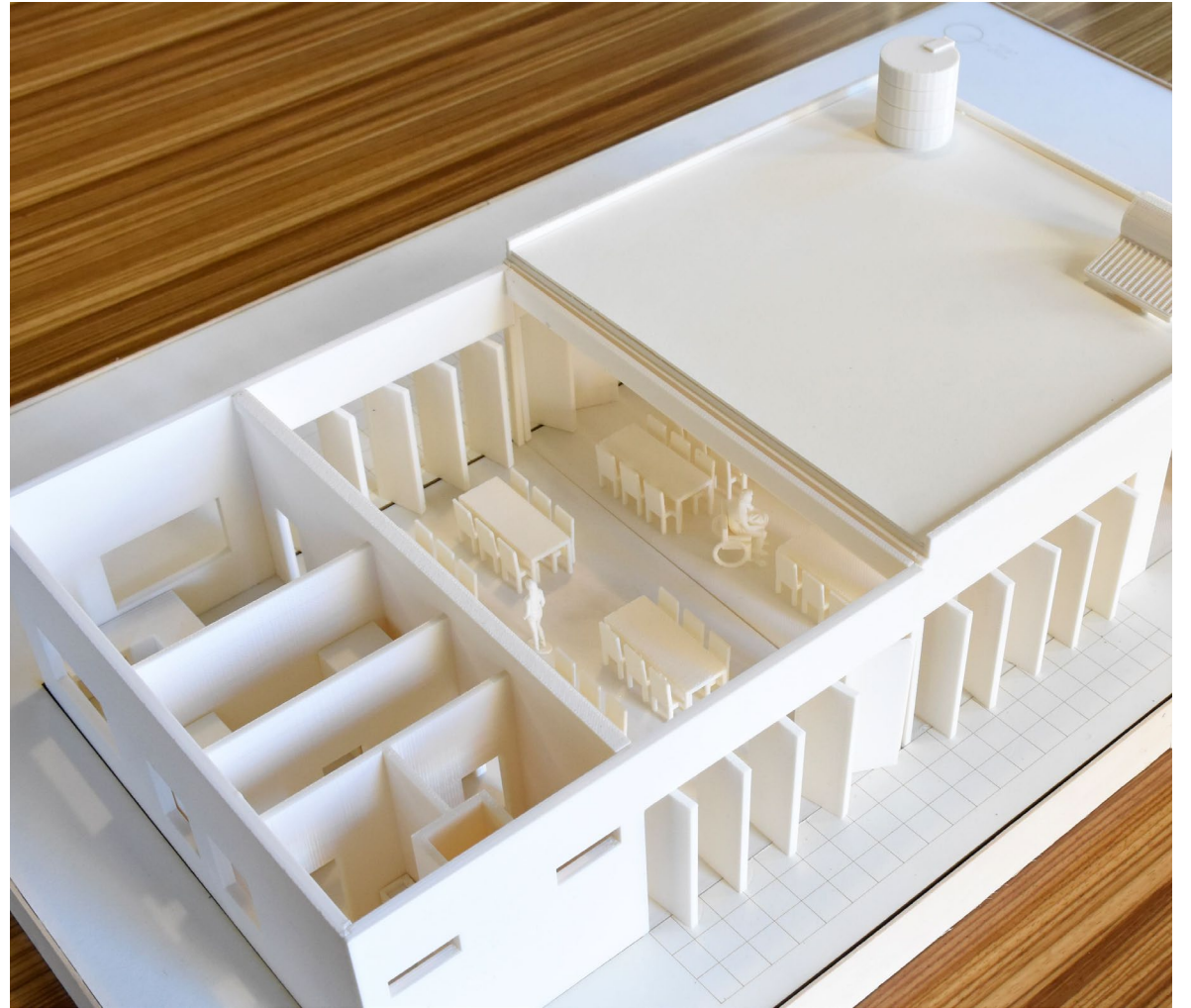
Systems

- Communications
- Structural
- Energy Storage
- Energy Generator
- Rainwater Collection
- Solar Power
- Solar Thermal Heater
- Openings
- Vegetation
- Ventilation





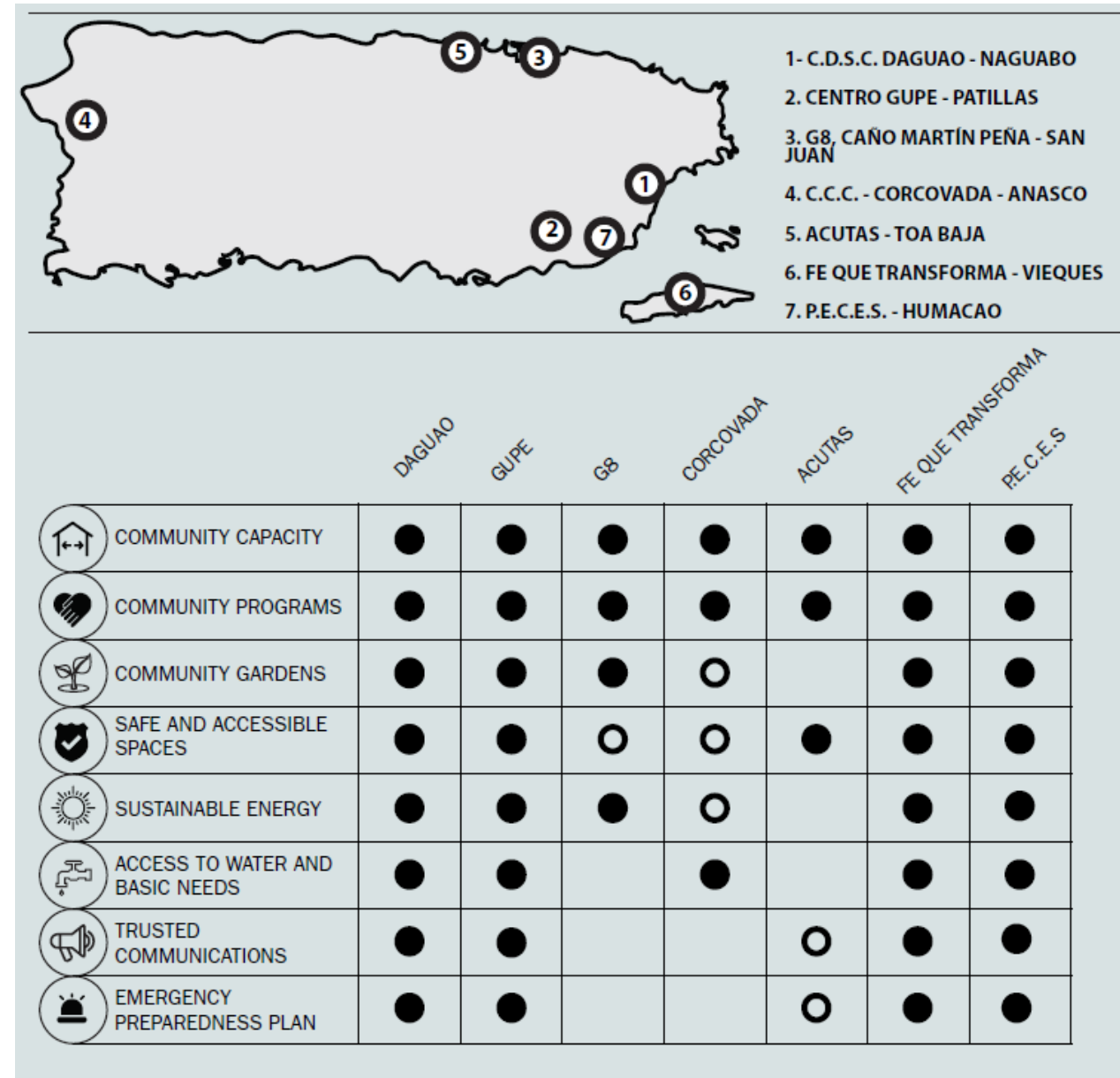
Community Center Model



Part 4

Community Case Studies

- **Comité Desarrollo Social y Cultural de Daguao Inc.**, Naguabo
- Guardarraya Unidos por un Patrimonio Educativo Inc. (**GUPE**), Patillas
- **Comunidad G8**, Fideicomiso de la Tierra del Caño Martín Peña, San Juan
- **Comité Comunal Corcovada**, Inc, Añasco
- Asociación de Comunidades Unidas Tomando Acción Solidaria (**ACUTAS**), Toa Baja
- **Fé que Transforma**, Vieques
- Programa de Educación Comunal de Entrega y Servicios Inc. (**P.E.C.E.S.**), Humacao



Case Study / Daguaao



Comité Desarrollo Social y Cultural de Daguaao Inc., Naguabo

Comité Desarrollo Social & Cultural Daguao, Inc. Naguabo, PR

Project by:

Para La Naturaleza, Resilient Power Puerto Rico & Mercy Corps

Develop resilient community centers to improve the provision of services during emergencies and disaster relief.



A resilient Community Center.



Daguao's leadership crosses generations.





Water cisterns and filtration provides clean and reliable water to the community.

Electric power, water cistern, community edible garden, communication system.



Craft room, museum and multipurpose room.

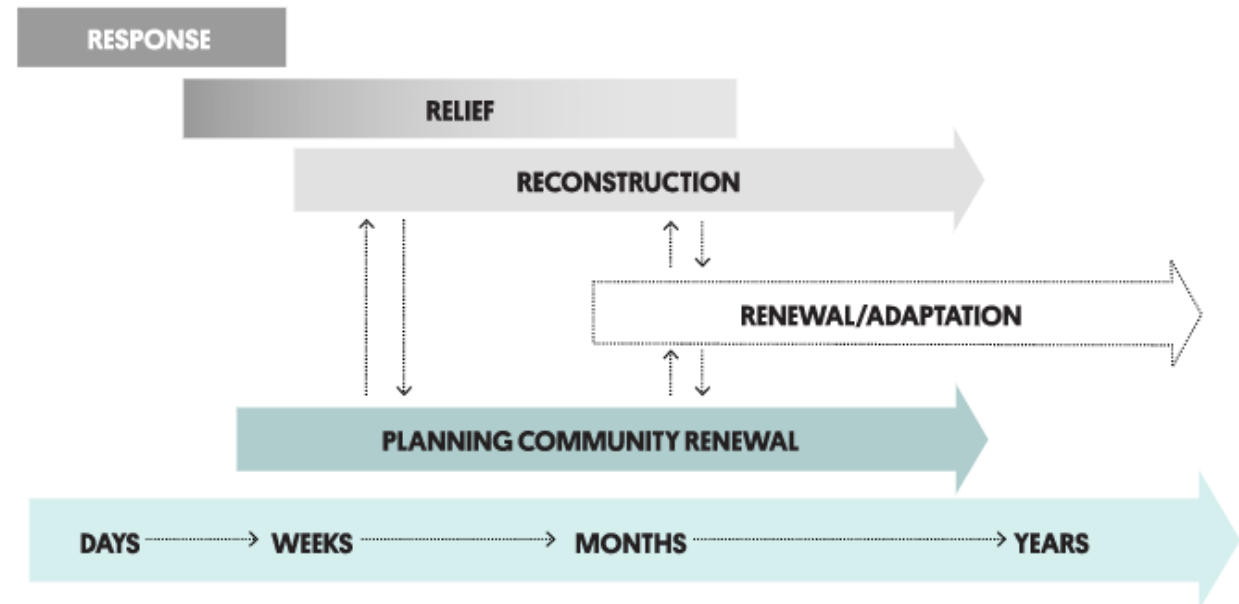
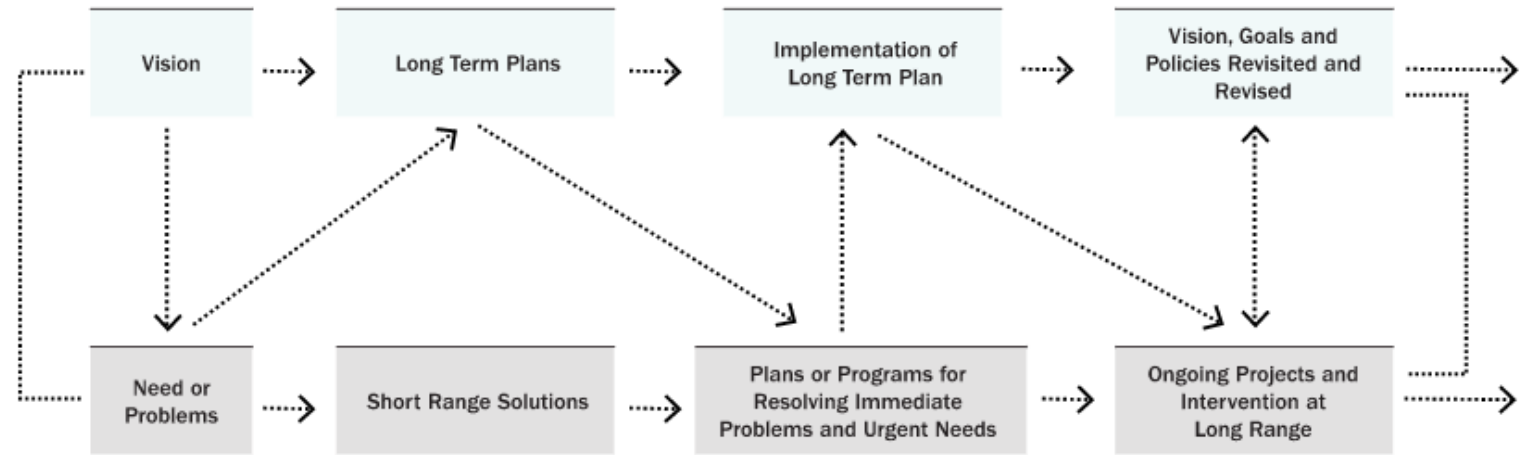


Entrepreneurship program, community mapping and people.

Community planning is a year-round process.

It is a co-creation process in which everyone's voice matter and multiple perspectives are welcome.

Community Planning is a Year-Round Process



Please visit the resources online:
<https://keepsafeguide.enterprisecommunity.org/en/inspiring-post-disaster-planning-community>

Thank you.